

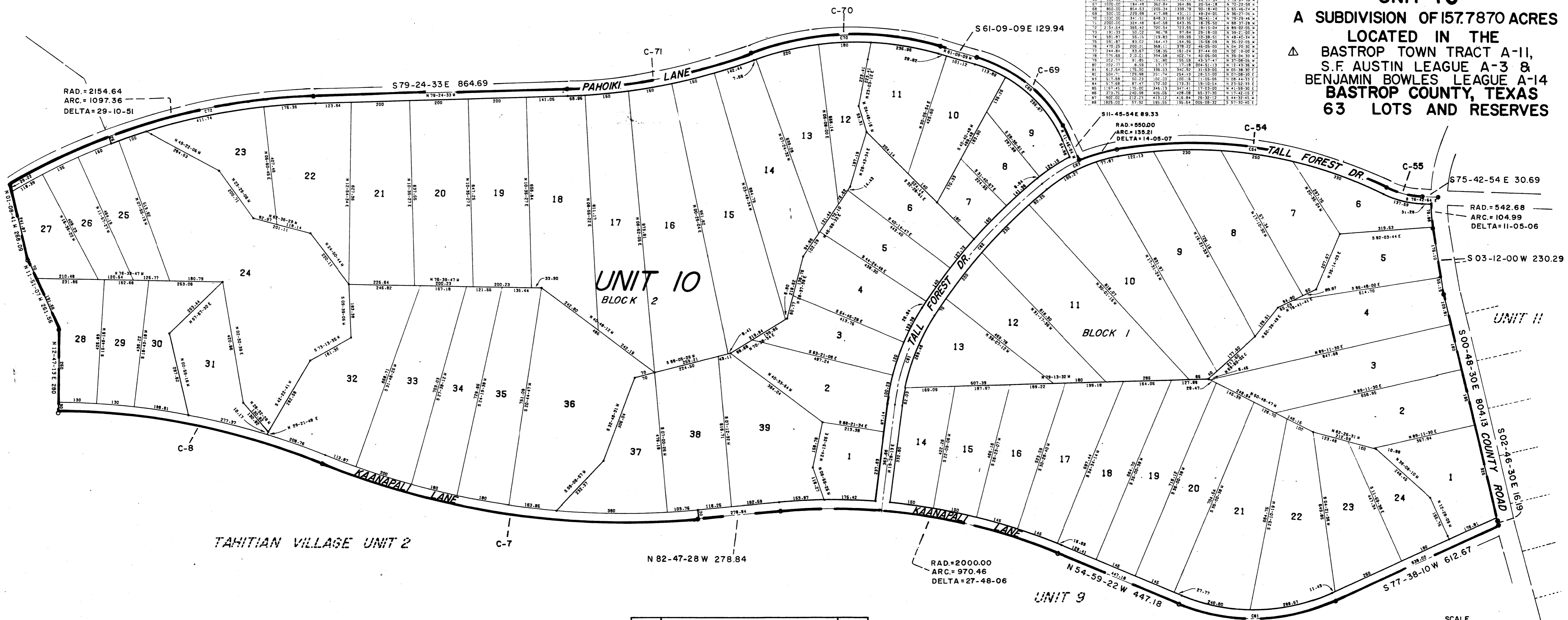
GENERAL NOTES

1. EXCEPT WHERE OTHERWISE NOTED, ALL STREETS ARE 50 FEET WIDE.
2. ALL CUL-DE-SAC RADII ARE 50 FEET.
3. THERE IS A 40 FOOT BUILDING LINE ADJACENT TO ALL STREETS AND CUL-DE-SACS.

CURVE DATA

NOTE	ARC	RAD	CHORD	ARC	DEF. AN	CHORD
1	180.00	18.00	36.00	180.00	18.00	36.00
2	180.00	18.00	36.00	180.00	18.00	36.00
3	180.00	18.00	36.00	180.00	18.00	36.00
4	180.00	18.00	36.00	180.00	18.00	36.00
5	180.00	18.00	36.00	180.00	18.00	36.00
6	180.00	18.00	36.00	180.00	18.00	36.00
7	180.00	18.00	36.00	180.00	18.00	36.00
8	180.00	18.00	36.00	180.00	18.00	36.00
9	180.00	18.00	36.00	180.00	18.00	36.00
10	180.00	18.00	36.00	180.00	18.00	36.00
11	180.00	18.00	36.00	180.00	18.00	36.00
12	180.00	18.00	36.00	180.00	18.00	36.00
13	180.00	18.00	36.00	180.00	18.00	36.00
14	180.00	18.00	36.00	180.00	18.00	36.00
15	180.00	18.00	36.00	180.00	18.00	36.00
16	180.00	18.00	36.00	180.00	18.00	36.00
17	180.00	18.00	36.00	180.00	18.00	36.00
18	180.00	18.00	36.00	180.00	18.00	36.00
19	180.00	18.00	36.00	180.00	18.00	36.00
20	180.00	18.00	36.00	180.00	18.00	36.00
21	180.00	18.00	36.00	180.00	18.00	36.00
22	180.00	18.00	36.00	180.00	18.00	36.00
23	180.00	18.00	36.00	180.00	18.00	36.00
24	180.00	18.00	36.00	180.00	18.00	36.00
25	180.00	18.00	36.00	180.00	18.00	36.00
26	180.00	18.00	36.00	180.00	18.00	36.00
27	180.00	18.00	36.00	180.00	18.00	36.00
28	180.00	18.00	36.00	180.00	18.00	36.00
29	180.00	18.00	36.00	180.00	18.00	36.00
30	180.00	18.00	36.00	180.00	18.00	36.00
31	180.00	18.00	36.00	180.00	18.00	36.00
32	180.00	18.00	36.00	180.00	18.00	36.00
33	180.00	18.00	36.00	180.00	18.00	36.00
34	180.00	18.00	36.00	180.00	18.00	36.00
35	180.00	18.00	36.00	180.00	18.00	36.00
36	180.00	18.00	36.00	180.00	18.00	36.00
37	180.00	18.00	36.00	180.00	18.00	36.00
38	180.00	18.00	36.00	180.00	18.00	36.00
39	180.00	18.00	36.00	180.00	18.00	36.00
40	180.00	18.00	36.00	180.00	18.00	36.00
41	180.00	18.00	36.00	180.00	18.00	36.00
42	180.00	18.00	36.00	180.00	18.00	36.00
43	180.00	18.00	36.00	180.00	18.00	36.00
44	180.00	18.00	36.00	180.00	18.00	36.00
45	180.00	18.00	36.00	180.00	18.00	36.00
46	180.00	18.00	36.00	180.00	18.00	36.00
47	180.00	18.00	36.00	180.00	18.00	36.00
48	180.00	18.00	36.00	180.00	18.00	36.00
49	180.00	18.00	36.00	180.00	18.00	36.00
50	180.00	18.00	36.00	180.00	18.00	36.00
51	180.00	18.00	36.00	180.00	18.00	36.00
52	180.00	18.00	36.00	180.00	18.00	36.00
53	180.00	18.00	36.00	180.00	18.00	36.00
54	180.00	18.00	36.00	180.00	18.00	36.00
55	180.00	18.00	36.00	180.00	18.00	36.00
56	180.00	18.00	36.00	180.00	18.00	36.00
57	180.00	18.00	36.00	180.00	18.00	36.00
58	180.00	18.00	36.00	180.00	18.00	36.00
59	180.00	18.00	36.00	180.00	18.00	36.00
60	180.00	18.00	36.00	180.00	18.00	36.00
61	180.00	18.00	36.00	180.00	18.00	36.00
62	180.00	18.00	36.00	180.00	18.00	36.00
63	180.00	18.00	36.00	180.00	18.00	36.00
64	180.00	18.00	36.00	180.00	18.00	36.00
65	180.00	18.00	36.00	180.00	18.00	36.00
66	180.00	18.00	36.00	180.00	18.00	36.00
67	180.00	18.00	36.00	180.00	18.00	36.00
68	180.00	18.00	36.00	180.00	18.00	36.00
69	180.00	18.00	36.00	180.00	18.00	36.00
70	180.00	18.00	36.00	180.00	18.00	36.00
71	180.00	18.00	36.00	180.00	18.00	36.00
72	180.00	18.00	36.00	180.00	18.00	36.00
73	180.00	18.00	36.00	180.00	18.00	36.00
74	180.00	18.00	36.00	180.00	18.00	36.00
75	180.00	18.00	36.00	180.00	18.00	36.00
76	180.00	18.00	36.00	180.00	18.00	36.00
77	180.00	18.00	36.00	180.00	18.00	36.00
78	180.00	18.00	36.00	180.00	18.00	36.00
79	180.00	18.00	36.00	180.00	18.00	36.00
80	180.00	18.00	36.00	180.00	18.00	36.00
81	180.00	18.00	36.00	180.00	18.00	36.00
82	180.00	18.00	36.00	180.00	18.00	36.00
83	180.00	18.00	36.00	180.00	18.00	36.00
84	180.00	18.00	36.00	180.00	18.00	36.00
85	180.00	18.00	36.00	180.00	18.00	36.00
86	180.00	18.00	36.00	180.00	18.00	36.00
87	180.00	18.00	36.00	180.00	18.00	36.00
88	180.00	18.00	36.00	180.00	18.00	36.00
89	180.00	18.00	36.00	180.00	18.00	36.00
90	180.00	18.00	36.00	180.00	18.00	36.00
91	180.00	18.00	36.00	180.00	18.00	36.00
92	180.00	18.00	36.00	180.00	18.00	36.00
93	180.00	18.00	36.00	180.00	18.00	36.00
94	180.00	18.00	36.00	180.00	18.00	36.00
95	180.00	18.00	36.00	180.00	18.00	36.00
96	180.00	18.00	36.00	180.00	18.00	36.00
97	180.00	18.00	36.00	180.00	18.00	36.00
98	180.00	18.00	36.00	180.00	18.00	36.00
99	180.00	18.00	36.00	180.00	18.00	36.00
100	180.00	18.00	36.00	180.00	18.00	36.00

UNIT 13



**PINE FOREST
PHASE III
AMENDED PLAT OF
UNIT 10**
A SUBDIVISION OF 157.7870 ACRES
LOCATED IN THE
BASTROP TOWN TRACT A-11,
S.F. AUSTIN LEAGUE A-3 &
BENJAMIN BOWLES LEAGUE A-14
BASTROP COUNTY, TEXAS
63 LOTS AND RESERVES

SEE SHEET 1 OF 2 - UNIT 10	2/79
REV. DESCRIPTION	DATE

